



2016 *Report to the* **Community**

Blueprints moves beyond access to success

This year, we changed the name of Blueprints, our signature near-peer college access mentoring program, to the **Blueprints College Success Initiative**. Low-income, minority, and first-generation college-going students face academic, financial, and social barriers to prepare for college, apply to the best-fit schools, apply for financial aid, enroll and persist in their studies, and ultimately graduate. Access is not enough, and that's why we committed to advocating for our students' success on the pathway to a postsecondary degree or credential. ►

2015-16 Blueprints participants

BY GRADE LEVEL



9th grade

555

10th grade

33

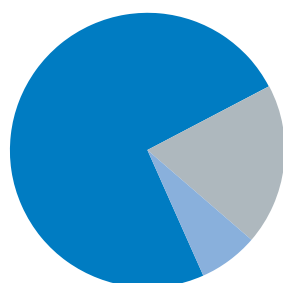
11th grade

511

12th grade

299

BY RACE
and ETHNICITY



74%

African
American

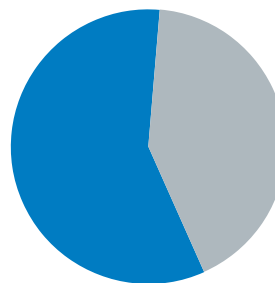
19%

White

7%

Hispanic,
Asian, or
Multiracial

BY GENDER



58%

Female

42%

Male

26%

First-generation
college-going students

\$45.5 million

in supplementary scholarships

208

College student
mentors

College is the attainment of valuable postsecondary credentials beyond high school, including professional/technical certificates and academic degrees.

COLLEGES ACCEPTED TO

Alabama A&M University
Alabama Fire College
Alabama State University
Albany State University
Alcorn State University
American Music & Dramatic Academy
Arkansas Baptist College
Auburn University
Auburn University Montgomery
Austin Peay State University
Benedict College
Berea College

Bethune College
Bethune-Cookman University
Bevill State Community College
Birmingham-Southern College
Bradley University
Carson-Newman University
Clafin University
Clark Atlanta University
Concordia College
Dillard University
East Central Community College
East Los Angeles Community College
East Mississippi College

East Mississippi Community College
Faulkner University
Fisk University
Florida A&M University
Fort Valley State University
Full Sail University
Grambling State University
Huntingdon College
Itawamba Community College
Jackson State University
Jacksonville State University
Jefferson State Community College
Johnson & Wales University

Johnson C. Smith University
Judson College
Kennesaw State University
Kentucky State University
LaGrange College
Lane College
Lawson State Community College
Loyola University
Lurleen B Wallace Community College
Marion College
Marion Military Institute
Mercer University
Miami Dade College

Middle Tennessee State University
Miles College
Mississippi College
Mississippi State University
Mississippi State University for Women
Mississippi Valley State
Morehouse College
Morris College
Murray College
Nashville State Community College
Norfolk State University
North Carolina Central University
Northwest-Shoals Community College



"Even though I am in college, there are still some things that are fuzzy to me. If they ask me a question, if I don't know the answer, then I'll be able to look it up. Through being a mentor, I have been able to learn so much."

*Yaneliz Fernandez,
Northwest-Shoals Community College Student
Mentor at Phil Campbell High School*



"My Blueprints mentor helped me write my scholarship application essays. A couple of times I even texted my mentor in the middle of the night. I was able to send her my essays, and she edited them and sent them right back to me."

*Miriam Jollah,
Woodlawn High School Class of 2016
Lawson State Community College Freshman*

Lawson State and Alabama Possible launch peer mentoring partnership

Lawson State Community College and Alabama Possible teamed up to help recent Birmingham City Schools graduates successfully transition to college.

Beginning this fall, second- and third-year Lawson State student mentors are checking in with first-year student mentees every other week. The mentors and mentees also meet each month for professional development workshops. Topics covered include budgeting, decision-making skills, study skills, successful relationships, and connecting academic studies and career success. ►



Oakwood University
Orange Coast College
Pensacola State College
Reedley College
Rust College
Shelton State Community College
Shorter College
South Louisiana Community College
Southern University
Spring Hill College
Stillman College
Talladega College
Tennessee State University

Texas Southern University
Troy University
Tuskegee University
UAB
UAH
United States Military Academy
University of Alabama
University of Memphis
University of Middle Tennessee
University of Missouri
University of Montevallo
University of North Alabama
University of North Georgia

University of North Texas
University of South Alabama
University of Southern Mississippi
University of West Alabama
Valdosta State University
Virginia Polytechnic Institute and State University
Wallace State Community College-Hanceville
Wallace State Community College-Selma
West Virginia University
Western Kentucky University
Word of Life Bible Institute
Xavier University

2015-16 BLUEPRINTS PARTNERS

Central (Tuscaloosa) High School
Hillcrest High School
Holy Family Cristo Rey High School
Francis Marion High School
Locust Fork High School
Montevallo High School
Phil Campbell High School
Ramsay High School
Wenonah High School
Woodlawn High School

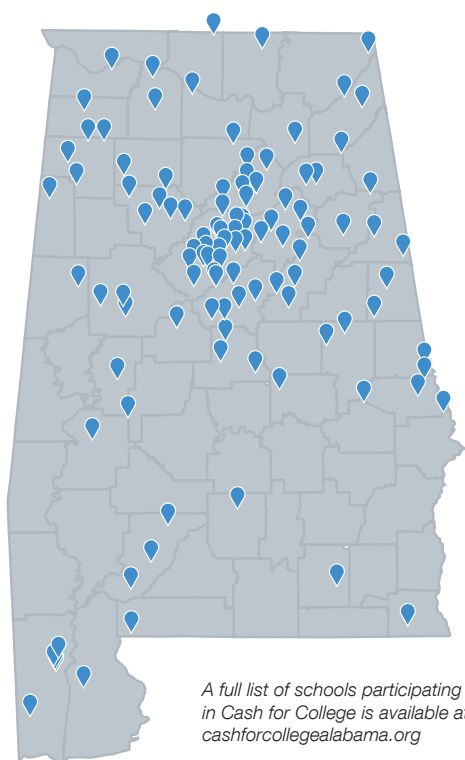
Birmingham-Southern College
Lawson State Community College
Northwest-Shoals Community College
Shelton State Community College
Troy University
The University of Alabama
UAB
University of Montevallo

Cash for College makes college more affordable by boosting Free Application for Federal Student Aid (FAFSA) completion through a combination of direct services in the Birmingham City Schools and a statewide FAFSA completion network.

The FAFSA is required for any student seeking federal and state financial aid, including grants and loans at all 2- and 4-year colleges. According to the U.S. Department of Education, 9 out of 10 students who complete a FAFSA attend college the following fall.

Low-income, minority, and first-generation college-going students are the least likely to know that financial aid, including Pell Grants of up to \$5,920 annually, is available by completing their FAFSA. Alabama students left \$63.8 million Pell Grants dollars on the table in 2013, and the state ranked 44th in FAFSA completion. ►

2015-16 CASH FOR
COLLEGE PARTICIPANTS



A full list of schools participating in Cash for College is available at cashforcollegealabama.org

What's new for 2017?

- FAFSA filing began on October 1, 2016, instead of January 1, 2017
- Families use their 2015 taxes to complete their financial aid form
- 55 percent of Birmingham's Class of 2017 should have their FAFSA completed by June 2017
- 205 high schools statewide prioritized FAFSA completion by participating in Cash for College Alabama



"The FAFSA will help my parents and me with finances for college. It helps take the pressure off me."

Destiny Hicks
Wenonah High School Class of 2016
North Carolina Central University Freshman



"Cash for College is an easy way for an adult to provide support and encouragement to students. I think the FAFSA is such a concrete way to help a student who has the potential to access the next level of education."

Kristan Walker
Director of Outreach Ministries
Trinity United Methodist Church

Cash for College Birmingham

Cash for College's key partnership is in the Birmingham City Schools, where we aim to boost the FAFSA completion rate from 36 percent in 2013 to 70 percent by 2020 through direct services with Birmingham City Schools seniors and their families. Cash for College shares FAFSA completion data with local educators, holds FAFSA workshops, and connects families with tax prep workshops and FAFSA events.

1,233 STUDENTS SERVED

132 VOLUNTEERS

60 FINANCIAL AID
WORKSHOPS

54% OF BIRMINGHAM'S CLASS OF
2016 THAT COMPLETED THEIR
FAFSA BY JULY 1, 2016

Cash for College Alabama

Cash for College Alabama builds a college-going culture by encouraging students and their families to complete their FAFSA. Participating high schools completed a short application, set a FAFSA completion goal, and agreed to make FAFSA completion a local priority.

Participating educators got professional development and technical assistance to promote FAFSA completion at their school, and Alabama Possible shared FAFSA completion data and best practices gathered from partners both in and out of Alabama.

121 PARTICIPATING
SCHOOLS

17,751 HIGH SCHOOL
SENIORS

7,574 FAFSA
COMPLETED AS
OF JULY 1, 2016



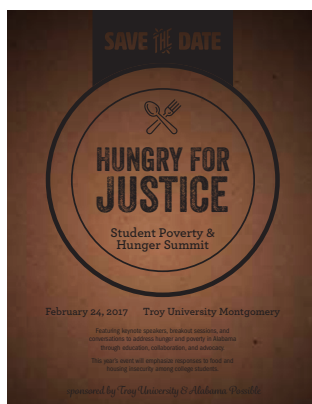
"I want to be able to go to college to become a nurse. I am happiest when I am helping others. Without FAFSA, I wouldn't be able to go to college."

Tamara Fletcher
Montevallo High School Class of 2016
University of South Alabama Freshman



"Being the only counselor in a school can be challenging when undertaking big projects such as FAFSA completion. Cash for College gave me a network of resources and people to connect with."

Kathryn McElvy
School Counselor
Wadley High School



Clockwise, from top: Alabama State University students presented their research on the geography of poverty; Auburn University students reflected on how to bring lessons learned back to campus; please save the date for the 2017 event; and Troy University students shared their work fighting food waste and food insecurity with Campus Kitchens.

Alabama college students are hungry for justice

Conference equips students to advocate to end poverty and hunger

More than 900,000 Alabamians, including 300,000 children, are impacted by poverty and/or food insecurity. On February 19, 2016, 80 students, educators, and community leaders gathered at Troy University-Montgomery to share information and plan for the future.

Students presented their advocacy projects, which ranged from mapping poverty in Montgomery, to student-run meal recovery programs and near-peer college access mentoring.

What did students take away?

Troy University students discussed the need for student-to-student outreach across Troy's three campuses to connect to community organizations already involved in issues of poverty and hunger.

Alabama State University students and faculty discussed how to use university resources to cultivate broader engagement with low-income and food-insecure communities near their Montgomery campus.

Auburn University students committed to collaboration among similar groups to overcome apathy caused by an overwhelming number of engagement opportunities.

Birmingham-area students from the University of Montevallo and UAB agreed that there is value in starting with a small, concerted group rather than waiting for critical mass. ►

Lifetime of Learning conference encourages civic engagement

Higher education network members participate in issues-based discourse on poverty and social justice

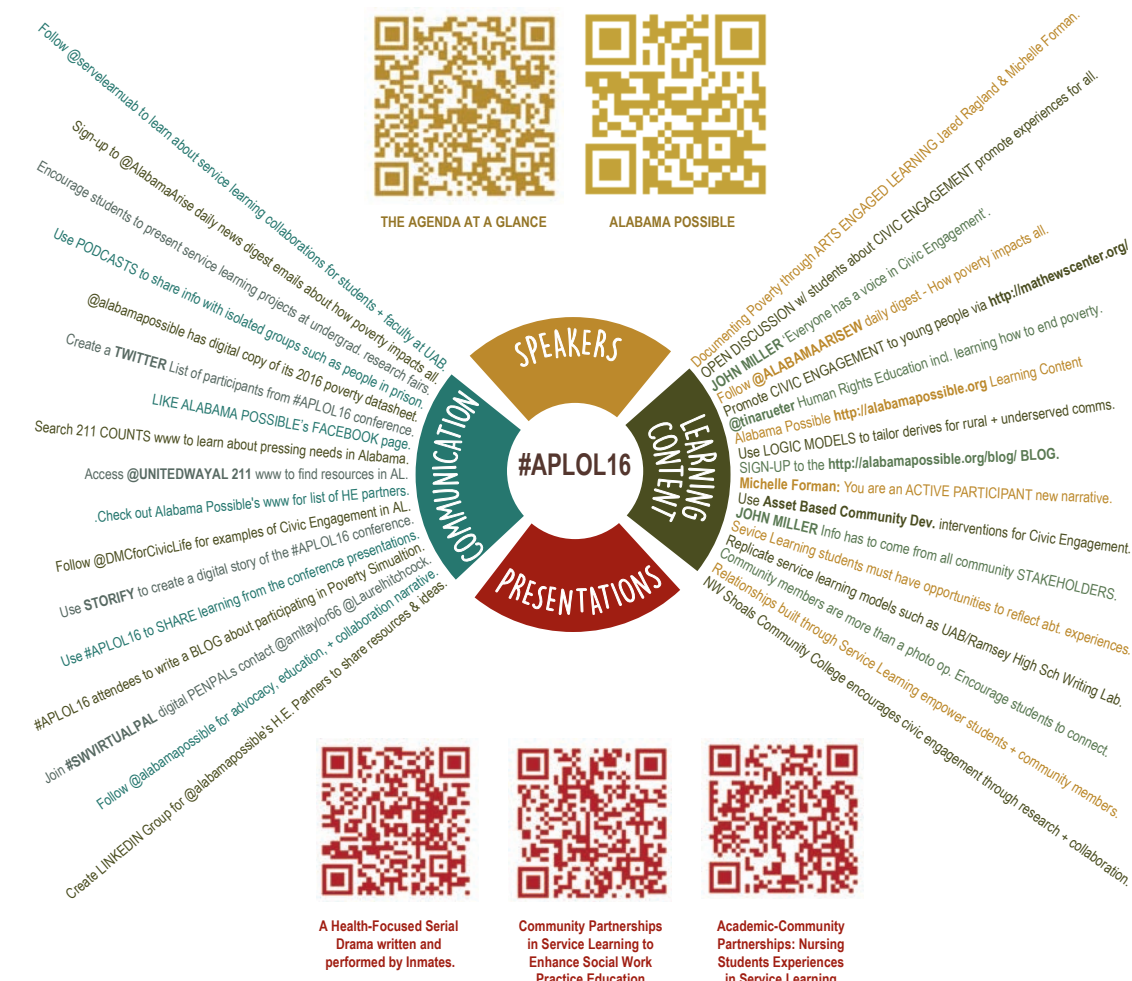
Nearly 100 faculty, staff, students, and community partners gathered at UAB on Friday, October 7, to share best practices among Alabama colleges and universities to use engaged learning initiatives as a foundation for justice learning. Justice learning teaches students about reasoned debate and the often-conflicting values inherent in American democracy.

UAB Institute of Human Rights Director Dr. Tina Kempin Reuter started the day with a talk about the purposes and potential of human rights education. Educators from disciplines including the arts, nursing, English, social work, and student leadership shared best practices learned from their on-the-ground experiences.

Lunch included a panel discussion about lessons learning in equipping students to lead with equity based on 2011 Tornado Recovery, and the day ended with a poverty simulation.

In order to continue the conversation beyond the boundaries of the conference, participants were invited to contribute to the #AP2016LOL Learning Wheel, pictured below. ►

Lifetime of Learning #APLOL16 Alabama Conference LearningWheel



Could you survive a month in poverty?

More than 1,200 Alabamians had the opportunity to learn about the barriers that low-income families face by participating in poverty simulations facilitated by Alabama Possible.

Poverty simulation participants role-play a month in the life of a low-income family and grapple with challenges as they try to get to work, get the kids to school, feed their families, and keep their homes safe. As a result, participants report they have greater impact in their volunteerism, philanthropy, and advocacy efforts.

What do participants say?

"How do we help poor people without making it harder on them?"

"People from low income families really want to do better, but things help to prevent it."

"My agency is going to rethink our processes regarding required documentation and rescheduling appointments."

"I learned not to pre-judge people and will listen to why they need assistance."

"The simulation gives people a realistic view of poverty."

"I will have more compassion and empathy with my clients."

"I will tell people about the various problems that feed into poverty: transportation, keeping a job, feeding your family, and paying utilities."

"I'll try to help people without referring them to another agency."

2016 POVERTY SIMULATION PARTNERS INCLUDE

Alabama Association of School Boards
Alabama Partnership for Children
Alabama State Bar Association
Auburn First Baptist Church
Auburn University
Avondale Samaritan Center
Canterbury United Methodist Church
Chambers County Schools
Community Action Association of Alabama
Faulkner University

Leadership Alabama
Leadership Birmingham
Leadership Montgomery
NAACP – Alabama Chapter
National Association of Social Workers – Alabama
Roanoke City Schools
Tarrant City Schools
Trinity United Methodist Church
Troy University

United Way of West Alabama
UAB
University of Montevallo
Utah Community Action Partnership
Vestavia Hills United Methodist Church
Walker County Youth Leadership Forum
Wallace State Community College – Hanceville
Women's Fund of Greater Birmingham

To bring a poverty simulation to your campus, civic organization, business, or faith community, please contact Kristina Scott at kscott@alabamapossible.org



Clockwise from top: Roanoke City Schools educators experienced the impact poverty has on their students; child development and community service workers from North Alabama Community Action Agencies learn about the roles they will play during a simulation at a JCCEO Head Start center; youth at Auburn First Baptist Church think about the choices single moms must make to provide for their kids; Shoals-area Leadership Alabama alumni teamed up with local leaders, educators, and social service agencies to host a poverty simulation in Florence; a participant in the Florence simulation got information about payday loans at the Quick Cash; applying for public benefits like food stamps provided a lifeline for a participant in a simulation at the Avondale Samaritan Center.

2016 Honors

BIRMINGHAM BUSINESS JOURNAL

2016 Nonprofit Awards Outstanding Small Nonprofit



2016 Social Work Practicum Agency of the Year

Executive Director Kristina Scott named one of AL.com's 2016 Women Who Shape the State



Many thanks to the foundations, higher education institutions, faith communities, business and community organizations, and individuals who supported our work and made financial contributions.

FAITH COMMUNITIES

Auburn First Baptist Church
Avondale Samaritan Place
Canterbury United Methodist Church
Christian Service Mission
Church of the Nativity, Episcopal
Independent Presbyterian Church
Faith Chapel Christian Center
Southside Baptist Church
Vestavia Hills Baptist Church
Trinity United Methodist Church

COMMUNITY AND PUBLIC ORGANIZATIONS

Alabama Appleseed Center for Law & Justice
Alabama ARISE
Alabama Partnership for Children
Alabama School Readiness Alliance
Alabama State Conference of the NAACP
Alabama State Department of Education
Birmingham City Schools
Birmingham Education Foundation
Blount County Schools
Bold Goals Coalition
Chambers County Board of Education
Community Action Agencies of Alabama
Daniel Foundation of Alabama
David Matthews Center for Civic Life
EAT South
End Child Hunger in Alabama Taskforce
Equal Justice Initiative
Florence Housing Authority
Franklin County Schools
GEARUP Alabama
Habitat for Humanity
Tuscaloosa
Hispanic Interest Coalition of Alabama
Holy Family Cristo Rey Catholic High School

Jones Valley Teaching Farm
National Association of Social Work - Alabama
National College Access Network
Perry County Schools
Roanoke City Board of Education
Shelby County Schools
Thompson Foundation
Tuscaloosa City Schools
Tuscaloosa County Schools
United Way of Central Alabama
United Way of West Alabama
VOICES for Alabama's Children
Women's Network

FOUNDATIONS & CORPORATE SUPPORT

Alabama Media Group
Alabama Power Foundation
Alabama State Bar Association
Alagasco/Spire Energy
AmazonSmile
BBVA Compass Foundation
Beeland & Grace Nielsen Fund
Birmingham Jewish Foundation
Bradley Arant Boult Cummings LLP
Burr & Forman, LLP
Cahaba Brewing Company, LLC
Caring Foundation
Cole Financial Planning
Community Foundation of Greater Birmingham
EW Motion Therapy Management
Honda Manufacturing of Alabama
Iberia Bank
Joseph H. & Reva Engel Foundation
Kresge Foundation
Leaf & Petal
LIV Apartment Partners LLC
Lloyd Wilson & Associates
Lumina Foundation
Markstein
Mary Reynolds Babcock Foundation
Mayer Electric Supply Co.
Medical Properties Trust

National Bank of Commerce
Noble Hour
Progress Bank
Reese Phifer, Jr. Memorial Foundation
Regions Bank
Taco Bell Foundation For Teens
Tarrant City Board of Education
Team Tacaia Charities
VIVA Health
Vowell & Associates
Vulcan Materials Company
Walker Area Community Foundation
Wells Fargo Foundation
Women's Fund of Greater Birmingham
Youthserve - Youth Philanthropy Council

HIGHER EDUCATION ALLIANCE CORNERSTONE MEMBERS

Auburn University
Auburn University at Montgomery
Birmingham-Southern College
Northwest-Shoals Community College
Samford University
University of Alabama at Birmingham

HIGHER EDUCATION ALLIANCE MEMBERS

Alabama Community College System
Athens State University
Calhoun Community College
Enterprise State Community College
Faulkner University
Jacksonville State University
Judson College
Lawson State Community College
Northeast Alabama Community College
Shelton State Community College
Trenholm State Community College
Troy University

University of Montevallo
University of West Alabama
Wallace State Community College—Hanceville

HIGHER EDUCATION SUPPORTERS

Alabama State University
The University of Alabama

INDIVIDUALS

Aaron Bern
Adam Bishop
Adam Hoose
Adele Ariola
Aisha Henley
Albert Brewer
Alexia Vasser
Alexis Robinson
Alice Bowsher
Alicia Scott
Allison Muhlendorf
Allison Nanni
Alyson King
Alyson Butts
Alyson Ray
Amal Alshirf
Amanda & Edward Wilson
Amanda Faye Currie
Amanda Storey
Amy Badham
Amy Clayton
Amy Kaiser
Amy Knight
Ana Ramsay
Ana Valeriano
Andrew Anderson
Andrew Duffey
Angela Bishop
Angela Nolan
Angelica Smith
Anje Roney
Ann Florie
Anna Patterson
Anne & Mike Warren
Anne & Neal Berte
Anne Mitchell
Anne Wilson
Annette Allen
Anthony Betancourt
Antonio Consenta
April Hoge
Ariel Billingsley
Ariel Smith

Ashley Conaway
Ashley Ware
Ashley Vrocher
Benny LaRussa, Jr.
Bethany Alford
Bethany Burns
Betsy Faucette
Betty & George Likis
Beverly Krannich
Blake Whitten
Bonnie Lynn Mitchell
Brenda Hackney
Brenda Smith
Brittany Sturdivant
Brooke & Daniel Coleman
Brooke & Robert Battle
Bruce Akin
Bryce Willis
Camelia & Robert Holmes
Cameron & Scott Vowell
Cameron & Scott Vowell
Candace Wason
Candice Murdock
Cari Cleckler
Carlton Wood
Carlton Williams
Carol Wolfe
Carole Clarke
Caroline Harada
Caroline Harris
Caroline Janeway
Caroline Yelding
Carolyn Howell
Carrie Warel
Cassandra Ellis
Catherine & Emmett McLean
Charlotte Boles
Chelsea Singleton
Cheryl & Nathan Ross
Cheryl Morgan
Chip Brantley
Chris Ball
Christi Jones
Christine Bussey
Cindy Garcia
Claire Finney
Claire & Sam Parker
Claire Finney
Claudette Green
Claudia Calder
Clay Graham
Clay Hodge
Cole Patterson

Coleman Moore
Connie Kohler
Connie Lang
Connie Coleman
Courtney Bentley
Cristin Foster Brawner
Cynthia Portis
Daimon Jones
Daniel Jones
Dale Droke
Dan Stephens
Dana Oliver
Dane Goode
Danelle King
Daniel Sims, Jr.
Dare Meeks
Darius Gamble
David Fadule
Debbie Roberson
Debra Blaylock
Dee Woodham
Dena & Scott Berte
Deneshia Leonard
Denise Williams
Denise Moore
Deon Howard
Devynne Roahrig
Dianne Martin
Don & Sandy Logan
Dora & Sanjay K. Singh
Dorothy & Wayne Flynt
Douglas Barrett
Edward Friend
Edward Hardin
Erroll Whately
Elena Goebertus
Elevavov Christiansen
Elizabeth & Mike Goodrich
Ellen Potts
Elliott Lauderdale
Elna Brendel
Ericka Kelley
Ernest Jackson
Estelle Hebron-Jones
Eugene Berry
Euri Townsy
Evelyn Puckett
Everett Hoagland
Fatimah Shabazz
Feliaz Stuart
Felicia Johnson
Flora Giles
Frances & Miller Gorrie
Francis Rushton

Frank Bromberg
Fred Elliott
Gail Andrews
Gary White
Gay Johnson
George Taylor
Gerald Whitaker
Geri Beers
Gillian & Michael Goodrich
Glory McLaughlin
Gordon R. Walker
Gracie Johnsey
Greg Butrus
Greg Jeane
Gregory Osborne
Hailey Parker
Hal Fulmer
Hannah Altmeier
Harold Ripp
Hutton C.V. Smith
Holly Elkins
Humphrey Lee
Irene Blalock
Isabel & Freddie Rubio
Jacquelyn Holcomb
Jada Shaffer
Jamarie Collins
James Cullinan
James Griffo
James Matthews Jr.
Jamie Parker
Jamika Colvin
Jane Longshore
Jared Ragland
Jasmine Ruffin
Jatensia Calhoun
Jay Friedman
Jayde Price
Jean Shanks
Jeanne Caussin
Jeff Rogers
Jeffrey Caldwell
Jeffrey Stone
Jen Sellers
Jena Freese
Jeneve Brooks
Jennifer & Matthew Dent
Jennifer Kilburn
Jennifer Wilson
Jessica Rogers
Jill Kimbrell
Jim & Donna Sisson

About Alabama Possible

Board of Directors

Ralph Foster, Chair,
Auburn University
Fightress Aaron,
ActioNet, Inc.
Irene Blalock,
Birmingham Public Library (ret.)
Wendi Boyen,
Regions Bank
Sidney Brown, PhD,
Auburn University Montgomery (ret.)
Scott Cole,
Cole Financial Planning
Wayne Flynt, PhD*,
Auburn University (ret.)
Leon Frazier, EdD*,
Alabama State University (ret.)
Nicole Hampton,
Rosen Harwood

Laurel Hitchcock, PhD,
UAB
Elliott Lauderdale, PhD,
University of South Alabama (ret.)
Sam Parker,
New Visions Properties, LLC
Virginia Patterson,
Bradley Arant Boulton Cummings
Joey Pierson,
Tacala, LLC
Richard Rice,
Attorney at Law
Chandra Scott,
Mobile Area Education Foundation
Houston Smith,
Alabama Power
Libba Vaughan,
Freshwater Land Trust
Edward Wilson, MD, PhD,
Pathologist (ret.)

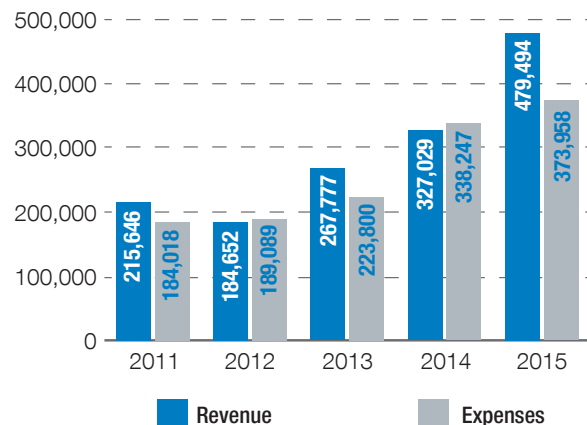
Staff

Kristina Scott, *Executive Director*
Jeannine Oliver, *Operations Manager*
Keslie Boyles,
College Success Program Coordinator
Jasmine Shaw,
Cash for College Birmingham Coordinator
Ashleigh Staples,
Statewide Initiatives Coordinator
Ayumi Byrd, *AmeriCorps VISTA*
April Davis, *AmeriCorps VISTA*
Jason Gardner, *AmeriCorps VISTA*
Allyson Varley, *Graduate Assistant*
Teneasha Wright, *Graduate Assistant*

Interns

Jessica Donovan, *The University of Alabama*
Mary Beth Gore, *University of Montevallo*
Antoinette Jackson, *Auburn University*
Carmen Johnson, *UAB*
Raven Knowlton, *Birmingham-Southern College*
Regan Murray, *UAB*
Tatiana Neuman, *Birmingham-Southern College*
Jordan Porter, *Birmingham-Southern College*
Leslie Simmons, *UAB*
Macey Sims, *Samford University*
Anthony Waller, *Birmingham-Southern College*
Rachel Waller, *Birmingham-Southern College*

Growing investments to remove barriers to prosperity, 2010-2015



source: Alabama Possible Form 990, available at alabamapossible.org/990

Alabama Possible is a statewide 501(c)(3) nonprofit which breaks down barriers to prosperity through education, collaboration, and research. We have changed the way people think and talk about poverty since 1993.

Jim Spearman
Joe Bryant
Joe Medori
Joey Pierson
John A. Floyd
John H. Waide
John Miller
John Northrop
John Secrist
John Tatter
John Turner
Jonathan Cellon
Jothany & Frank James
Joyce Spielberger & Maury Shevin
Juanita Farris
Judy Fulmer
Judy & Bruce Matthews
Judy & Gerson May
June & Mason Davis
Kalley Baker
Katanga Mants
Kate & Claude Nielsen
Katherine & Douglas Cole
Katherine Bradford
Katherine Phillips
Kathryn Bellamy
Kathryn Miree
Kathy & John English
Kay Kelly
Kaydee Erdreich Berman
Kayla Acklin
Kaylen Bishop
Kelly Adams
Kendrick King
Kendrick Rogers
Kent Andersen
Keynetha Greer

Kim & Bruce Rogers
Kim Davey
Kimberly Agee
Kimble Forrister
Koko McCall
Kooper Screws
Kristan Walker
Lucie Haynes
Kristin Carpenter
Kristin Harper
Kristina Scott
Lacey Wilson
Lane Wooley
Larry Gerber
LaSheila Marshall
LaTonya Pruitt
Latrise Kennedy
Laura & Steve Murray
Laura Chamlee Debiasi
Laura Johnson
Laura Woodruff
Laurel Hitchcock
Laurel & Kevin Hitchcock
Lauren Schwartz
Lauretta Freeman-Horn
Leah & Robert Palmer
Leah Sherman
Leann Cox
Lee Hamilton
Leigh Ann & Mark Berte
Leigh Laser Collins
Lesley & Ralph Foster
Lesley McClure
Leslie Simmons
Leslie & Roger Carlisle
Libba & Brooks Vaughan
Libby & Dale Peterson
Linda Mchawi
Lindsay Portela

Lisa & Alan Engel
Lisa & Mike Higginbotham
Lisa Baker
Liston Cartledge III
Lotoya Beard
Lottie Smith
Louise Thibodaux
Lucie Haynes
Lydia & Taylor Pursell
Lyn Frazer
M. James Gorrie
M. Miller Gorrie
Mackenzie Skiff
Madeleine Mann
Maeghan Vick
Magaly Aguirre
Mallory McDaniel
Margaret & Holman Head
Mark Nelson
Markeya Taylor
Marsha & Phillip Hurt
Mary Bertram
Mary Beth Finn
Mary Elkins Melton
Pam Peters
Mary Thomas
Mary Williams
Matt Leavell
Melanie & Jay Grinney
Melanie Gibbons Hallman
MelLeah Morris
Melinda & Tom McLemore
Melissa Mann
Meredith Tetloff
Mia Ellington
Michael Moore
Michael Rice
Michael Saunders
Michele Forman

Michelle Crunk
Mike Frederick
Miranda Gray
Mitchell Cohen
Mitchie Neel
Miyah Williams
Monica Chatman
Monica Collins
Monica Drake
Myrum Kamylle Parker
Najla Althagafi
Nakiya Stevens
Nancy & Bill Stetler
Nancy & Gary Dunavant
Nancy & Max Hale
Nancy Kimberly
Nancy Tran
Natalie Lane & T.C. McLemore
Nelia Albritton
Nichole Coleman
Nikita Bennett
Nora Lee
Norma Aldridge
Norma Harmon
Patrick Jones
Patti Rice
Paul Ward
Paula Addison
Pauline Ireland
Phil Hammonds
Phyllis Simmons
Phyllis Connell
Phyllis Mark

Porshe Wilson
Rachel Estes
Rachel Naftel
Rachel Parmar
Rachel Puckett
Rachel Trapp
Ram Alagan
Randle Cunningham
Rebecca Dunn
Reggie Hamdeed
Rhonda Siegel
Richard Rice
Robert White
Robin O'Sullivan
Robyn Raven
Rodney Ford
Ron Gilbert
Ronne & Donald Hess
Roxanne Paciesas
Roy Clem
Ruth Ann Lyman
Ryan Ramage
Sahra Lee
Salem Afangideh
Sallie Shipman
Sally & Richard Friedman
Sally Ann Smith
Sara Newell
Sarah Grace Hurt
Sarah McCausland
Sarah Sheikh
Saundra Cash
Scott Batey
Scott Selman
Scott Shunnarah
Sean King
Sean Stevens
Seela Aladuwa

Shakedra Clark
Shannon Williams
Sharon Anderson
Sharon Everhardt
Shauntae' Smith
Shayne Rittmann
Shelby Cole
Shelby Coleman
Shelia Goodwin
Sheree Davis
Sheri Krell
Sherry Loper
Shykeeliah Collins
Sidney L. Brown
Sissy Hembree King
Sonya Rivers
Sophia Stevenson
Stacy Pulliam
Stephanie & Houston Smith
Stephanie Beacham
Stephanie Taylor
Steven Hazelwood
Stewart Jones
Sumaira Zia
Susan & David Silverstein
Susan Barnett
Susan Clayton
Susan Dukes
Susan Nabers Haskell
Susan Pretrar
Suzane Churchman
Suzanne Austin
Suzanne Durham
Tamera Boykin
Tammie Johnson
Tammy Smith
Tanisha Stevenson

Tanya Brown
Tanya Hendrix
Terri Mudge
Tessa Graham
Tiffany Ford
Timothy Rooks
Timothy Wooley
Tina Kempin Reuter
Tondra Loder-Jackson
Tonya Stewart
Traci Welch
Tracy & Scott D Cole
Tracy Hips
Tracy Taylor
Trent Jones
Trish Harris
Tysia Sims
Valencia Jackson
Vikki & Kenneth Grodnor
Virginia Patterson
Wade McKinney
Walker & Bill Jones
Wanda Langley
Wendi & Richard Boyen
William Quattlebaum
William Sims
Willietta Conner
Wisda Robinson
Yaneliz Fernandez
Yasmeen Alzahrani
Yolanda King

Every effort has been made to acknowledge the generosity of our supporters correctly and completely. Should you discover an error or omission, please call us at 205-939-1408.

More than 900,000 Alabamians - including 300,000 children - live in poverty. Together, we can ensure that all Alabamians have the opportunity to lead prosperous lives.



alabamapossible

PO BOX 55058 // BIRMINGHAM, AL 35255 // 205-939-1408

alabamapossible.org